

CASE STUDY



Royal Gateway Project Caxton Street, London



KOR Energy Ltd

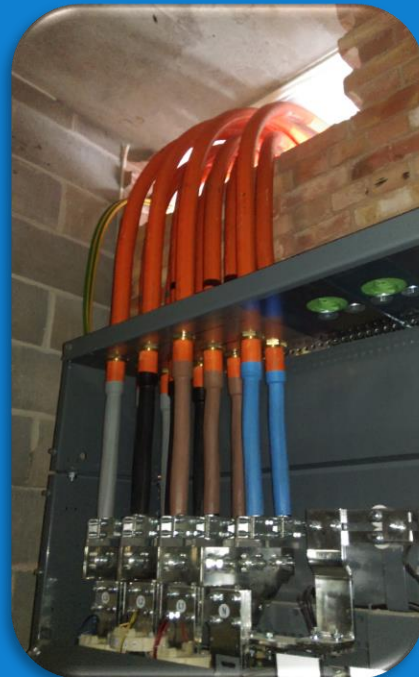
Linenhall House, Stanley Street,
Chester, CH1 2LR

t: **01244 906 213**

e: enquiries@korenergy.co.uk

w: www.korenergy.co.uk





Site Name

Royal Gateway – Caxton St

Client



Sector

Electricity

Kor Energy put in a brand new 2000Kva supply where we installed 3 substations and three 11Kv Al triplex cable circuits.

Galliard has brought a new project known as Royal Gateway and Caxton Works, the redevelopment of former industrial buildings off Caxton Street North in Canning Town. This is an all private development comprising of 336 apartments and penthouses.

Our team successfully completed the works at Caxton Street and we would like to thank Galliard for this opportunity.

The new elite urban village sits on the cusp of the Royal Docks





KOR Energy Ltd

Linenhall House, Stanley Street,
Chester, CH1 2LR

t: **01244 906 213**

e: enquiries@korenergy.co.uk

w: www.korenergy.co.uk

